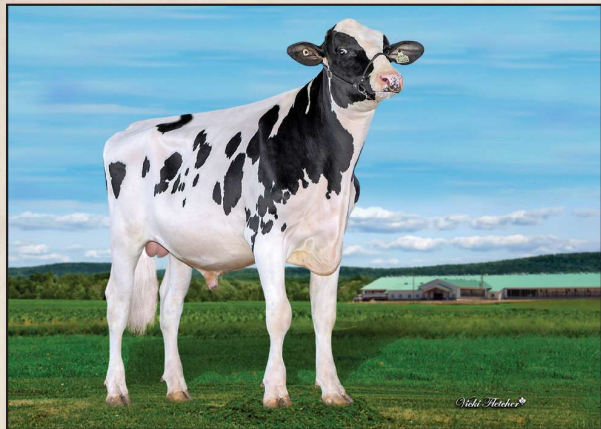


799H000150 *Bokma*
LEVEL-P



Reg: HOCANM15051262 / DOB: 8/27/2024 / ET BW POC A2A2 BB RDF VRF CDF BYF CVF BLF DPF / aAa 423165



SIRE
STANTONS RIGHT STUFF-PP

DAM
COMESTAR LATINET PERFECT VG-89-4YR 1*
sired by Siemers Rengd Perfect
3-11 RX P270 d 15,649 kg M 4.0%F 3.5%P

2ND DAM
COMESTAR LATASHA TROPIC EX-93 5*
sired by Peak Tropic
04-06 RX P125 D 12,023 KG M 4.8%F 3.4%P

3RD DAM
COMESTAR LANIKE UNIX VG-88-3YR 2*
04-06 RX P244 d 12,257 Kg M 4.7%F 3.4%P

4TH - 12TH DAMS
COMESTAR LAMADONA DOORMAN EX-94-2E 34* X VG-87-2YR 20*
X VG-88-3YR 22* X COMESTAR LAUTAMIE TITANIC VG-89-2YR 33* X
VG-89-4YR 21* X VG-85-2YR 2* X VG-87-6YR 23*
X COMESTAR LAURIE SHEIK VG-88-5YR 23* X EX-90 15*



COMESTAR LAMADONA DOORMAN-EX-94-2E-34*
 4th Dam

CANADIAN FIGURES					
Lifetime Performance		Rel 77%	Dtrs/ Herds	Functional Traits	
GPA LPI	+3831	Feed Efficiency	99	Daughter Fertility	102
PRO \$	\$2171	Herd Life	104	Milking Speed	100
Production	Rel 80%	Mastitis Resistance	101	Milking Temperament	98
Milk	1077 kgs	Metabolic Disease	100	Calving Ability	103
Fat	65 kgs +0.16%	Hoof Health	94	Dtr Calving Ability	103
Protein	58 kgs +0.16%	Lactation Persistence	96	Body Condition	100

Proof Date:	Apr 2026	Type Reliability:	77%	Dtrs/Herds:	/	Data supplied by	CDN
Conformation	14	Poor					Excellent
Mammary	10	Poor					Excellent
Feet & Legs	10	Poor					Excellent
Dairy Strength	9	Poor					Excellent
Rump	7	Poor					Excellent
Udder Floor	4R	Tilt					Reverse
Udder Depth	3S	Deep					Shallow
Udder Texture	7	Fleshy					Soft
Median Suspensory	5	Weak					Strong
Fore Attachment	7	Weak					Strong
Front Teat Placement	2C	Wide					Close
Rear Attachment Height	5	Low					High
Rear Attachment Width	7	Narrow					Wide
Rear Teat Placement	5C	Wide					Close
Teat Length	4L	Short					Long
Foot Angle	2	Low					Steep
Heel Depth	6	Shallow					Deep
Bone Quality	2	Coarse					Flat
Rear Legs Side View	3C	Straight					Curved
Rear Legs Rear View	8	Hocked-in					Straight
Front Leg View	6S	Knock-kneed					Straight
Locomotion	8	Non-mobile					Mobile
Stature	4T	Short					Tall
Height at Front End	4	Low					High
Chest Width	7	Narrow					Wide
Body Depth	2	Shallow					Deep
Rib Structure	6	Non-angular					Angular
Loin Strength	5	Weak					Strong
Rump Angle	0	High					Low
Pin Width	10	Narrow					Wide
Thurl Placement	2A	Back					Ahead

AMERICAN FIGURES			
Lifetime Performance		Functional Traits	
GTPi	+2938	Somatic Cell Score	2.92
NET MERIT	\$244	Productive Life	1.1
Production	Rel 80%	Daughter / Herds	0/0
Milk	799 lbs	Combined F&P	72 lbs
Fat	39 lbs +0.02%	Cheese Merit	\$258
Protein	33 lbs +0.03%	Fertility Index	-0.24
		Cow Conception Rate	0.3
		Daughter Preg Rate	-0.8
		Sire Calving Ease	1.4%
		Dtr Calving Ease	1.6%
		Sire Stillbirth	3.7%
		Dtr Stillbirth	3.4%

Proof Date:	Apr 2026	Type Reliability:	79%	Dtrs/Herds:	0/0	Data supplied by	Holstein USA
PTAT	1.85	Poor					Excellent
UDC	1.03	Poor					Excellent
FLC	1.28	Poor					Excellent
BSC	1.07	Poor					Excellent
Stature	1.53	Short					Tall
Strength	1.05	Weak					Strong
Body Depth	1.00	Shallow					Deep
Dairy Form	1.05	Coarse					Open Rib
Rump Angle	0.00	High					Sloped
Thurl Width	2.22	Narrow					Wide
Rear Legs-Side	0.75	Straight					Sickle
Rear Legs-Rear	1.84	Sickle					Straight
Foot Angle	1.06	Low					Steep
Feet & Legs Score	1.46	Low					High
F. Udder Attachment	1.75	Weak					Strong
Rear Udder Height	1.47	Low					High
Rear Udder Width	1.29	Narrow					Wide
Udder Cleft	1.23	Weak					Strong
Udder Depth	1.33	Deep					Shallow
Front Teat Placement	0.26	Apart					Close
Rear Teat Placement	0.65	Apart					Close
Teat Length	1.31	Short					Long